

## ASX/Media Release

7 June 2011

### BrightStar Resources Ltd

ABN 86 121 985 395

1/1 Nairn Street  
Fremantle WA 6160  
T. (+ 61) 8 9430 9966  
F. (+61) 8 9430 9965

#### Board of Directors:

**Warren Gilmour**  
Executive Chairman  
[warren@brightstarresources.com.au](mailto:warren@brightstarresources.com.au)

**Geoff Gilmour**  
Managing Director  
[geoff@brightstarresources.com.au](mailto:geoff@brightstarresources.com.au)

**Paul Payne**  
Technical Director  
[paul@brightstarresources.com.au](mailto:paul@brightstarresources.com.au)

**Graeme Clatworthy**  
Non-executive Director

**Barry Bolitho**  
Non-executive Director

**BrightStar Resources Limited**  
ASX code "BUT"

## BrightStar Commences Drilling at 520,000oz Miyabi Gold Project in Tanzania

- 10,000m RAB program commenced 6 June 2011
- 5km target zone on granite/greenstone contact
- Two lines of previous drilling at 800m spacing have each intersected strong bedrock gold mineralisation up to 60m wide
- Strong geophysical and geochemical anomalies
- Expected completion late July/early August

BrightStar Resources Limited ("BrightStar" or "Company") is pleased to announce that it has commenced drilling at the 520,000oz Miyabi Gold Project.

The project is a Joint Venture with UK based African Eagle Resources plc ("African Eagle") where BrightStar may earn 75% of the Miyabi Project in Tanzania. The Miyabi Project is located in the Lake Victoria Gold Field of Tanzania, some 150km southwest of BrightStar's 100% owned Kitongo Gold Project (Figure 1).

A drilling rig contracted from Layne Drilling has today commenced RAB and air core drilling of the exciting granite/greenstone contact zone targets at Miyabi. The targets are defined by coincident chargeability and magnetic anomalies and broad gold in soil geochemistry. Previous drilling is very sparse, but has intersected substantial zones of bedrock gold mineralisation which remain open and untested.

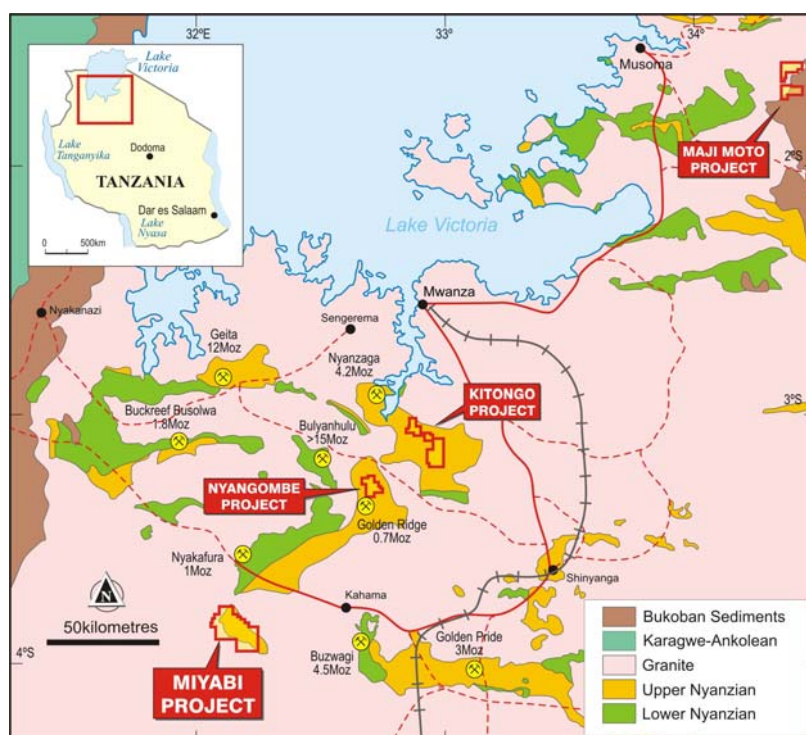


Figure 1 BrightStar Project Locations in Tanzania

## Miyabi Exploration Program Overview

A number of key targets for follow-up exploration have been identified at the project. The highest priority target is the 5km long granite/greenstone contact zone at the northwest margin of the greenstone belt. This area hosts two resources (Faida 200,000oz and Northern Zone 25,000oz) but is largely untested along its extent. Coincident chargeability and magnetic anomalies occur along the contact and suggest that sulphide bodies may be present beneath gold anomalies defined by soil geochemistry. The very sparse drilling in the zone (including the Shule prospect) has confirmed the presence of gold mineralisation associated with stringer pyrrhotite and pyrite. In particular, at the IP70 prospect, hole MBDH-47 intersected 9m at 1.34g/t Au from 34m and 9.7m at 0.65g/t Au from 188.8m to the end of the hole which ended in an interval grading 1.18g/t. Core orientations indicated that the hole was drilled down dip and parallel to the structures controlling mineralisation (Figure 3). The zone remains untested to the north of this hole.

The Shule prospect lies 800m southwest of IP70. The easternmost section of RC drilling intersected a zone of gold mineralisation 40-60m wide. Higher grade intersections within the zone include 9m at 0.84g/t Au from 40m and 15m at 0.76g/t Au from 109m (Figure 4).

The initial work program consists of RAB drill at 200m line spacings along the extent of the contact (Figure 2). Priority will be given to the holes east of the Shule prospect.

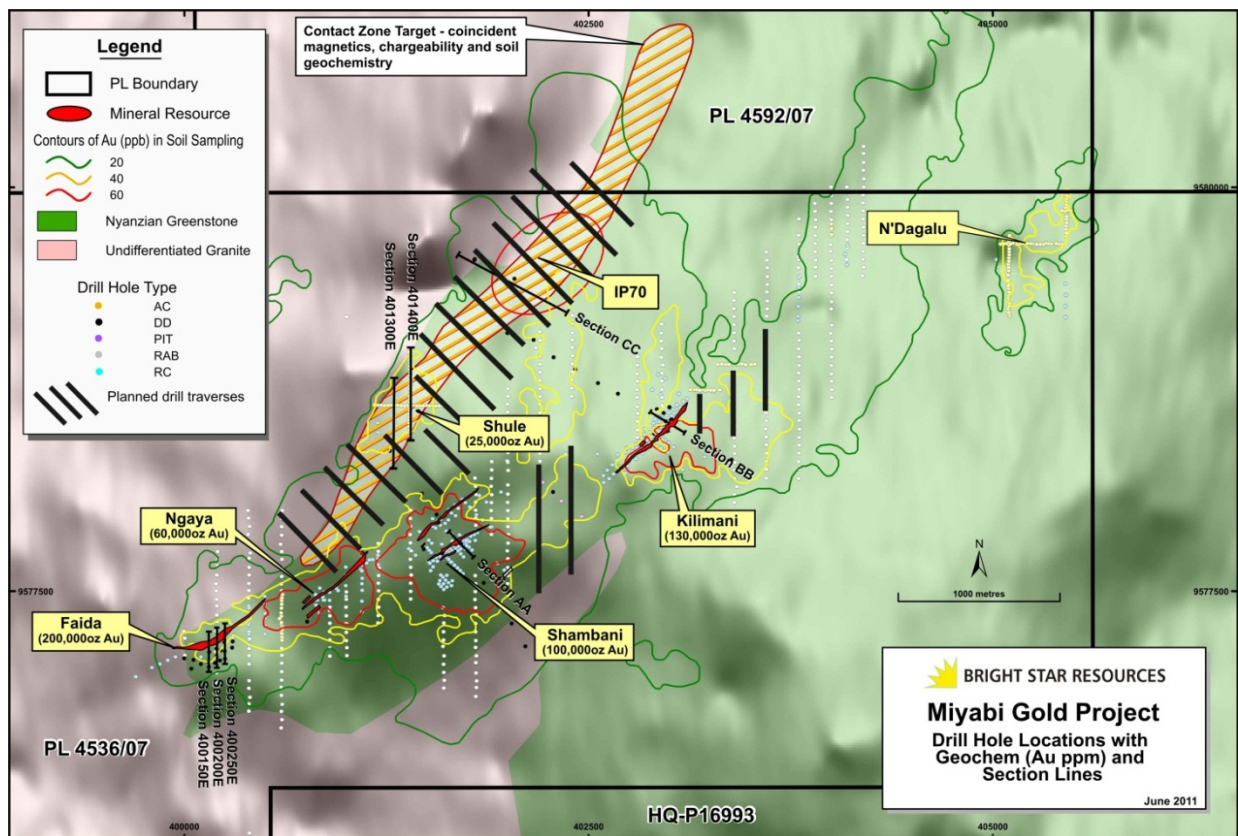


Figure 2 Miyabi Deposits, Drilling and Planned Drilling

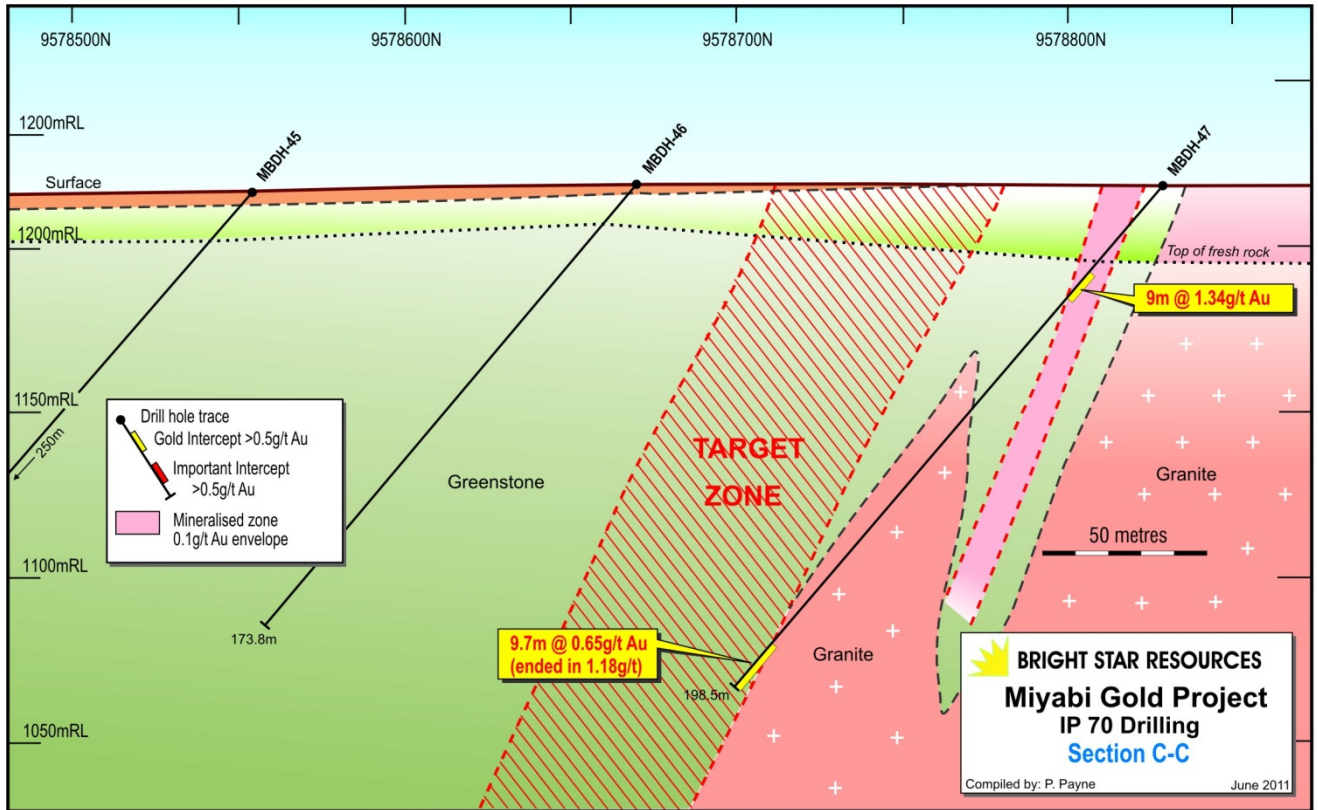


Figure 3 Cross Section at IP70 Prospect

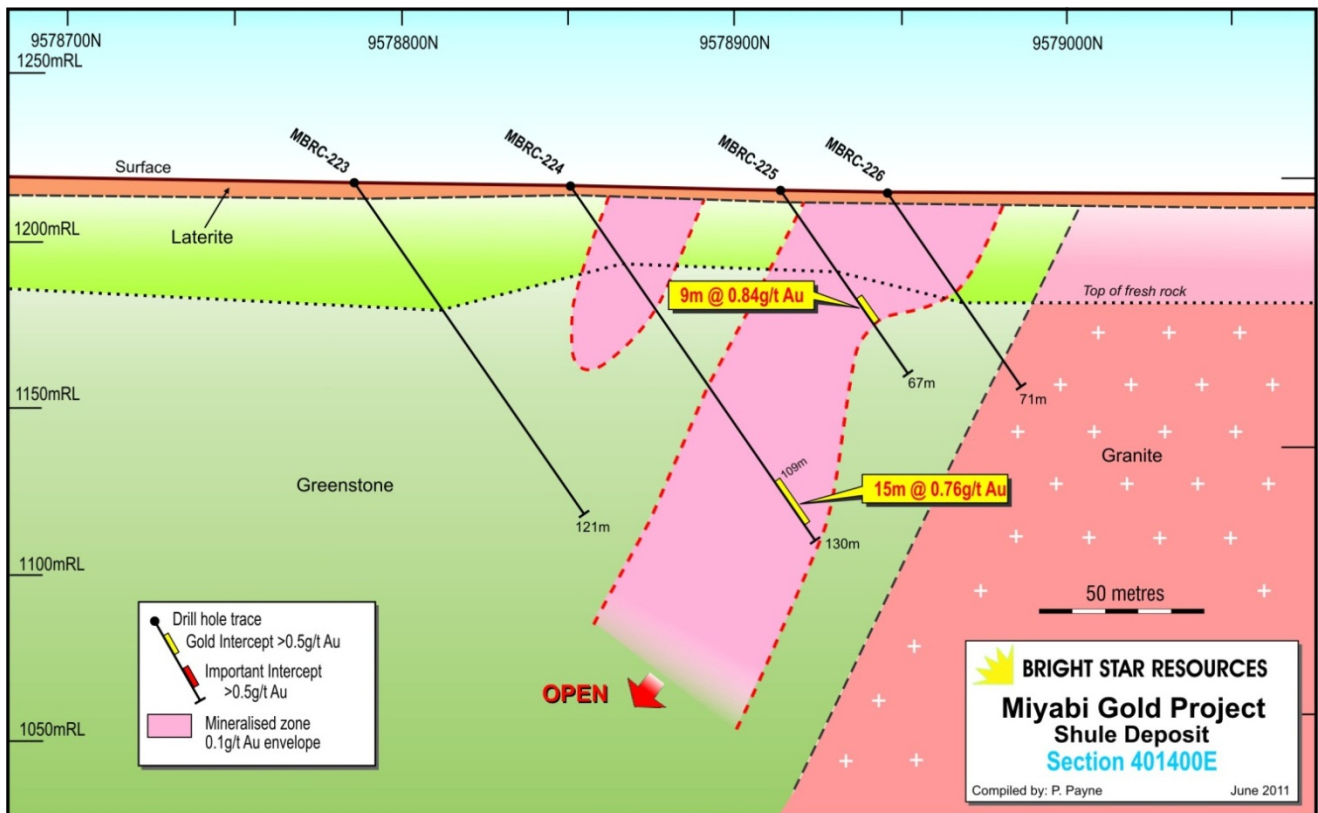


Figure 4 Cross Section 401400E at Shule Prospect

Facilities at the Project include a well-established camp with sample processing and administration facilities. This has allowed exploration work at the project to be initiated very quickly.

## Mineral Resources

A summary of the SRK Mineral Resource estimate at a 0.5g/t Au cut-off is shown below.

### Miyabi Mineral Resource Estimate 0.5g/t Au Cut-off (SRK Estimate 2006)

Deposit	Indicated			Inferred			Total Resource		
	Mt	g/t	Moz	Mt	g/t	Moz	Mt	g/t	Moz
Faida	3.5	1.5	0.17	1.0	0.9	0.03	4.4	1.4	0.20
Ngaya	0.2	1.0	0.01	1.5	1.1	0.05	1.7	1.1	0.06
Shambani	1.6	1.5	0.07	0.8	1.1	0.03	2.4	1.3	0.10
Kilimani	2.6	1.4	0.12	0.3	1.6	0.01	2.9	1.4	0.13
Northern Zone				1.0	0.8	0.02	1.0	0.8	0.02
<b>Total</b>	<b>7.9</b>	<b>1.5</b>	<b>0.37</b>	<b>4.5</b>	<b>1.0</b>	<b>0.15</b>	<b>12.4</b>	<b>1.3</b>	<b>0.52</b>

\*Rounding errors may occur

### For further information, please contact:

Geoffrey Gilmour  
Managing Director  
BrightStar Resources  
+61 8 9430 9966  
geoff@brightstarresources.com.au

Paul Payne  
Technical Director  
BrightStar Resources  
+61 8 9430 9966  
paul@brightstarresources.com.au

### Competent Person Statement

The information in this report that relates to Mineral Resources and exploration results is based on information compiled by Mr Paul Payne, a director and full time employee of BrightStar and a Member of The Australasian Institute of Mining and Metallurgy. Mr Payne has sufficient experience which is relevant to the style of mineralisation and type of deposit under consideration and to the activity which he is undertaking to qualify as a Competent Person as defined in the 2004 Edition of the 'Australasian Code for Reporting of Exploration Results, Mineral Resources and Ore Reserves'. Mr Payne consents to the inclusion in the report of the matters based on his information in the form and context in which it appears.